

### Sample Scenario A

- Discovery** A resident at the Village tells a staff member that her roommate has been speaking and writing about suicide for the past two days. The roommate seems increasingly depressed.
- Notification** The Village staff member can call Counseling & Psychological Services (CAPS), the University Police Department or Judicial Affairs directly to initiate a team response, or enlist help from their Students at Risk Network Representative.
- Consultation** Whoever of the above is notified will in turn notify the others, and confer with Village staff and anyone else that could have useful information on this student and her situation.
- Actions** An attempt would be made to encourage the student to meet with a CAPS professional. If she declines, University Police would make a determination as to the degree of danger she poses to herself or others. If a danger exists, they could commit her for mental health evaluation. If a continuing danger to others exists, Judicial Affairs may arrange for stay-away orders or other measures. All concerned team members would share information regularly until the situation is stabilized.
- Outcome** Depending on the student's mental condition, she could resume her studies, voluntarily withdraw or take a leave of absence until the situation is resolved.

### Sample Scenario B

- Discovery** A professor finds that a student is constantly drawing depictions of guns and seemingly violent acts while in class.
- Notification** The professor could contact CAPS, the University Police Department or Judicial Affairs directly to initiate a team response, or they could enlist their Students at Risk Network Representative, the Associate Vice President for Undergraduate Studies, or seek help from their Department Chair or Dean.
- Consultation** Whoever of the above is notified, team members will in turn notify the others, and confer with the professor or anyone else that could have useful information on this student and his situation.
- Actions** Judicial Affairs or the University Police Department would interview the student and attempt to make a determination as to the degree of danger the student poses to himself or others.
- Outcome** In this case, there appears to be no specific danger posed, so the team decides to monitor the situation. This case is discussed at subsequent team meetings until the situation is resolved.



CAL POLY POMONA



## PolyCARES Violence Prevention and Support for Those at Risk

### PolyCARES Team

**C**ommunity  
**A**ssessment and  
**R**esponse for  
**E**mployees &  
**S**tudents

## PURPOSE AND ORGANIZATION:

The purpose of PolyCARES (Community Assessment and Response for Employees & Students Team) is to proactively identify, assess, and offer a coordinated institutional response to community members (and non-members) who pose a risk to themselves, others and/or the campus community.

**Employees at Risk Network:** Made up of representatives from campus areas or roles most likely to identify and bring forward employees at risk or circumstances of concern involving faculty or staff.

**Students at Risk Network:** Made up of representatives from campus areas or roles most likely to identify and bring forward students at risk or circumstances of concern involving students.

**Community Risk Assessment Team:** Responsible for considering concerns brought forward by either Network, tracking existing cases, and recommending actions to the Risk Response Team.

**Risk Response Team:** Activated whenever the assessed risk will benefit from proactive intervention or requires response. In consultation with Community Risk Assessment Team, develops and/or executes plans to mitigate risks. All members of each Network and Team are required to sign a confidentiality agreement.

## MEETING SCHEDULE AND MEMBER ROLES

All members of the Community Risk Assessment and Response Teams, Students at Risk Network and Employees at Risk Network meet quarterly for training and discussion, reporting new concerns and/or updating existing cases.

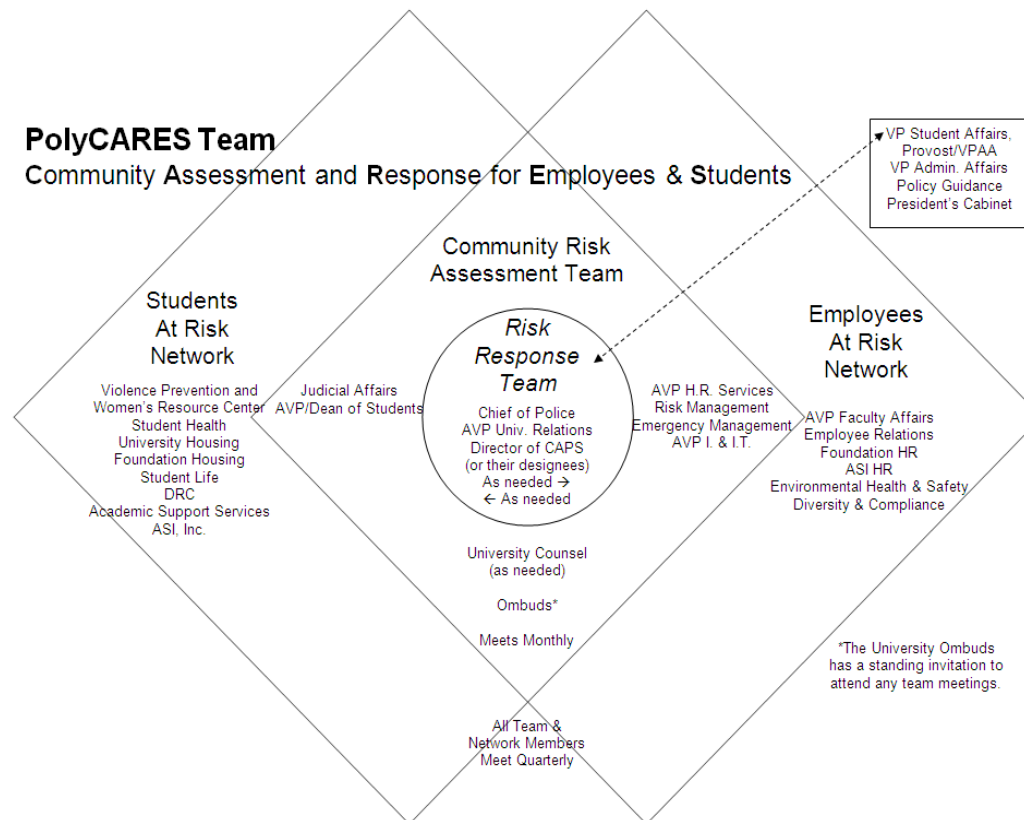
The Community Risk Assessment Team meets monthly, with an open invitation to members of the Employees at Risk Network or Students at Risk Network to attend for the purpose of reporting new concerns and/or updating existing cases. Specific Network members may be requested to attend, as needed, when a particular case(s) is being discussed.

## REFERRAL PROCESS

Incidents or individuals of concern can be brought to the team's attention in several different ways:

- Any concern of a serious, immediate or emergency nature, contact University Police at (909) 869-3070.
- Confidential consultation is available from Counseling and Psychological Services' on-call crisis counselor, Mondays through Fridays from 8:00 a.m. to 5:00 p.m., at (909) 869-3220.
- E-mail or telephone call to any member of the Community Risk Assessment and Response Teams, Students at Risk Network or Employees at Risk Network, describing the issue and why you are concerned for either the individual's safety and welfare, or the safety and welfare of others.
- Two confidential e-mail addresses are available-- [BroncoSafe@csupomona.edu](mailto:BroncoSafe@csupomona.edu) (University Police) or [BroncoConcerns@csupomona.edu](mailto:BroncoConcerns@csupomona.edu) (Counseling & Psychological Services--CAPS).
- To pass on non-emergency or non-immediate information, confidential calls can be made to the University Police Department's anonymous tip line at (909) 869-3399.

Referring individuals should provide as much information as is available in order to enable the team to make the most accurate and timely assessment.



## IMMEDIATE HELP

CALL	IF...
9-1-1	The violence or danger to self is occurring "right now" and you need immediate assistance for yourself or someone else.
3070	You need to file a report of violence or danger to self.

## WHEN TO SEEK ADVICE/CONSULTATION

- Violent Acts (threats, assaults, etc.)
- Weapons (guns, knives, clubs, etc.)
- Bizarre Behavior
- Thoughts of Suicide or Self-Harm
- Extreme Distress
- Family/Domestic Problems
- Alcohol/Drug Abuse
- Termination/Discipline
- Whenever you wonder, "Should I?"

If you need immediate consultation after hours and/or on the weekend, call University Police at (909) 869-3070. You may ask to talk to the Watch Commander or ask the dispatcher to contact the Police Chief, Emergency Services Coordinator, or Director of Counseling and Psychological Services (off campus/at home) and request that they call you back. Please provide your call-back number to the dispatcher.

