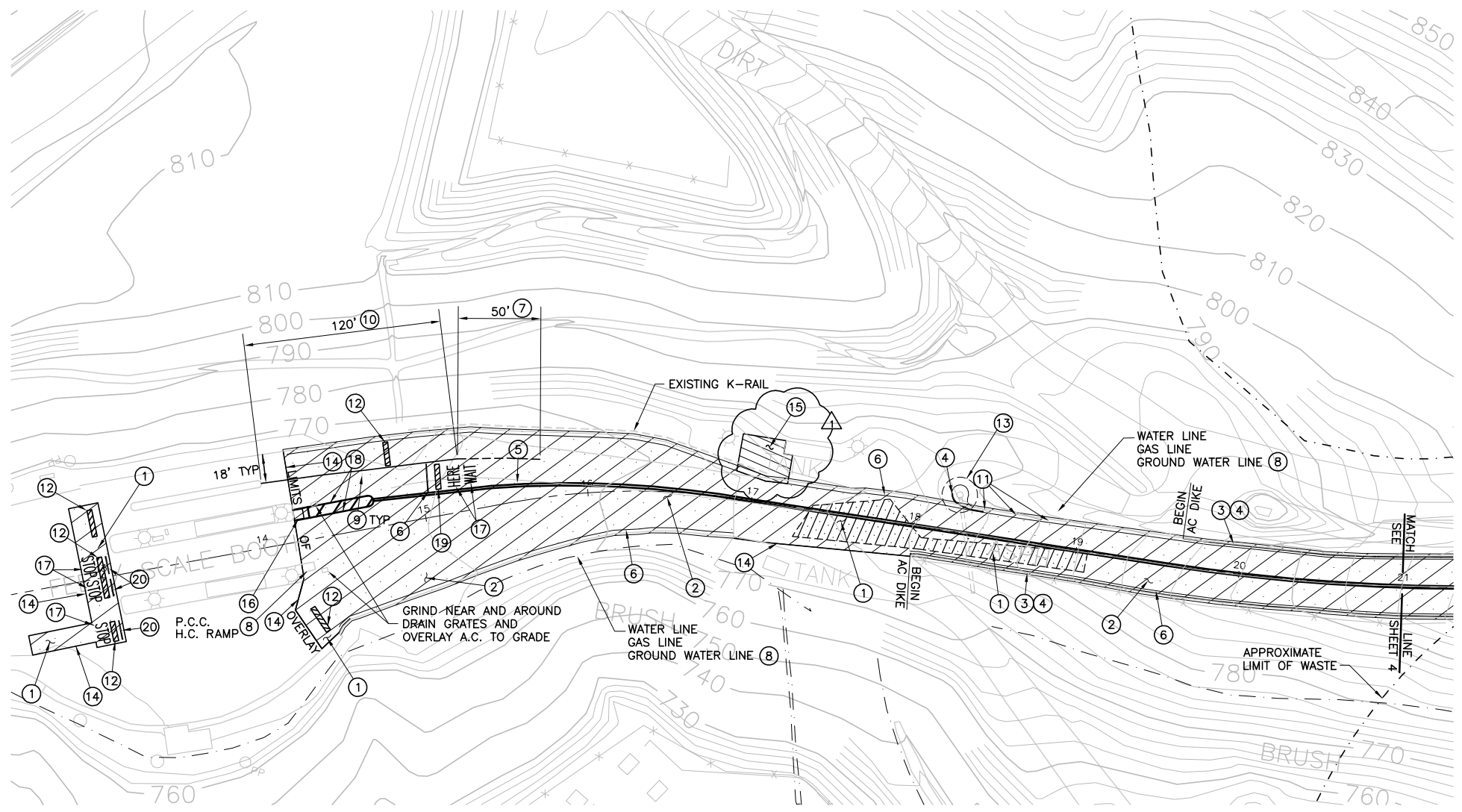
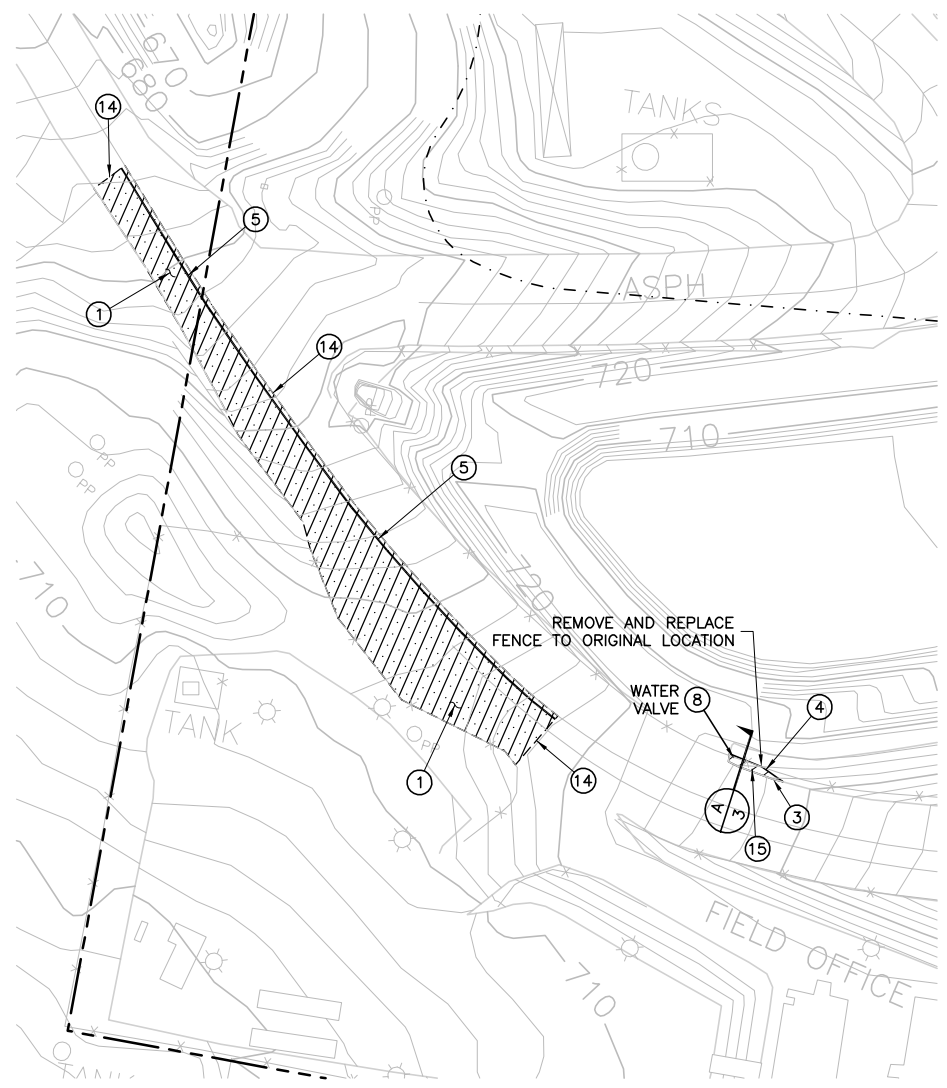


STORMDRAIN RUNOFF DIVERTER
NTS

(A)
3



CONSTRUCTION NOTES

- ① COLD PLANE EXISTING AC 2" DEEP MIN AND CONSTRUCT AC PAVEMENT (1/7) OR (2/7)
- ② CONSTRUCT AC OVERLAY (1/7) OR (2/7)
- ③ REMOVE EXISTING AC DIKE
- ④ CONSTRUCT 6" AC DIKE PER PFRD STD PLAN 120-1-0C TYPE DI-150
- ⑤ CONSTRUCT 4" DOUBLE YELLOW STRIPING PER CALTRANS STD DETAIL A20-A-21 (4/7)
- ⑥ CONSTRUCT 4" WHITE GUIDE LINE STRIPING PER CALTRANS STD DWG A20-B-27A/27B (4/7)
- ⑦ CONSTRUCT 4" WHITE SKIP LINE STRIPING PER CALTRANS STD DWG A20-A-8 (4/7)
- ⑧ PROTECT IN PLACE
- ⑨ REMOVE EXISTING DELINEATOR
- ⑩ CONSTRUCT AC BERM (5/7)
- ⑪ INSTALL TYPE Q DELINEATOR PER CALTRANS STD PLAN DETAIL A73A
- ⑫ REMOVE AND REPLACE WITH EQUAL DIMENSION EXISTING SPEED BUMP
- ⑬ CONSTRUCT SUMP INLET STRUCTURE (6/7)
- ⑭ CONSTRUCT AC TRANSITION OVERLAY TO JOIN EXISTING AC SURFACE (3/7)
- ⑮ CONSTRUCT 4" AC OVER 6" CLASS II BASE AT GRADE
- ⑯ REMOVE AND RECONSTRUCT AC HANDICAP RAMP (7/7)
- ⑰ CONSTRUCT 5' HIGH WORD STRIPING AS INDICATED PER CALTRANS STD DWG A24D
- ⑱ CONSTRUCT ISLAND STRIPING
- ⑳ CONSTRUCT AC SPEED BUMP (8/7)
- ㉑ CONSTRUCT LIMIT LINE AS INDICATED PER CALTRANS STD DWG A24D

NOTES:
 1. THE CONTRACTOR SHALL NOT INTERFERE WITH LANDFILL TRAFFIC AT ANY TIME. (SEE PROJECT SPECIFICATIONS FOR LIQUIDATED DAMAGES).
 2. THE CONTRACTOR SHALL SUBMIT A TRAFFIC CONTROL PLAN ACCEPTABLE TO IWMD 15 DAYS PRIOR TO THE START OF WORK. THE CONTRACTOR SHALL PHASE THE WORK SO THAT AT LEAST TWO LANES (12' LANE IN AND OUT) ARE AVAILABLE FOR THE LANDFILL TRAFFIC.

BAS
 BRYAN A. STIRRAT & ASSOCIATES
 CIVIL AND ENVIRONMENTAL ENGINEERS
 1360 VALLEY VISTA DRIVE
 DIAMOND BAR, CA. 91765
 (909) 860-7777

5-03	ADDITIONAL IMPROVEMENTS	COUNTY OF ORANGE INTEGRATED WASTE MANAGEMENT DEPARTMENT
REVISIONS		EXISTING ACCESS ROAD IMPROVEMENTS
PREPARED UNDER THE RESPONSIBLE CHARGE OF:		PLAN VIEW
		DESIGNED A.C.R./C.H.M.
DATE	DATE	CHECKED M.A.C.
AS-SHOWN	1-2003	DRAWING NO. 20001DB.DWG
		SHEET 3 OF 8