



DEGREE REQUIREMENT EVALUATION

California State Polytechnic University, Pomona

ELM Satisfied ___ Yes ___ No
EPT Satisfied ___ Yes ___ No
GWT Satisfied ___ Yes ___ No

YEAR: 1996-97

MAJOR MECHANICAL ENGINEERING (5503)
OPTION Petroleum Engineering
UNITS REQUIRED 202

NAME LAST FIRST M.I.
STUDENT ID NO.

EVALUATOR
DATE
UPDATES

Students in this major are expected to achieve and maintain a GPA of at least 2.00 in all courses included in Column I.

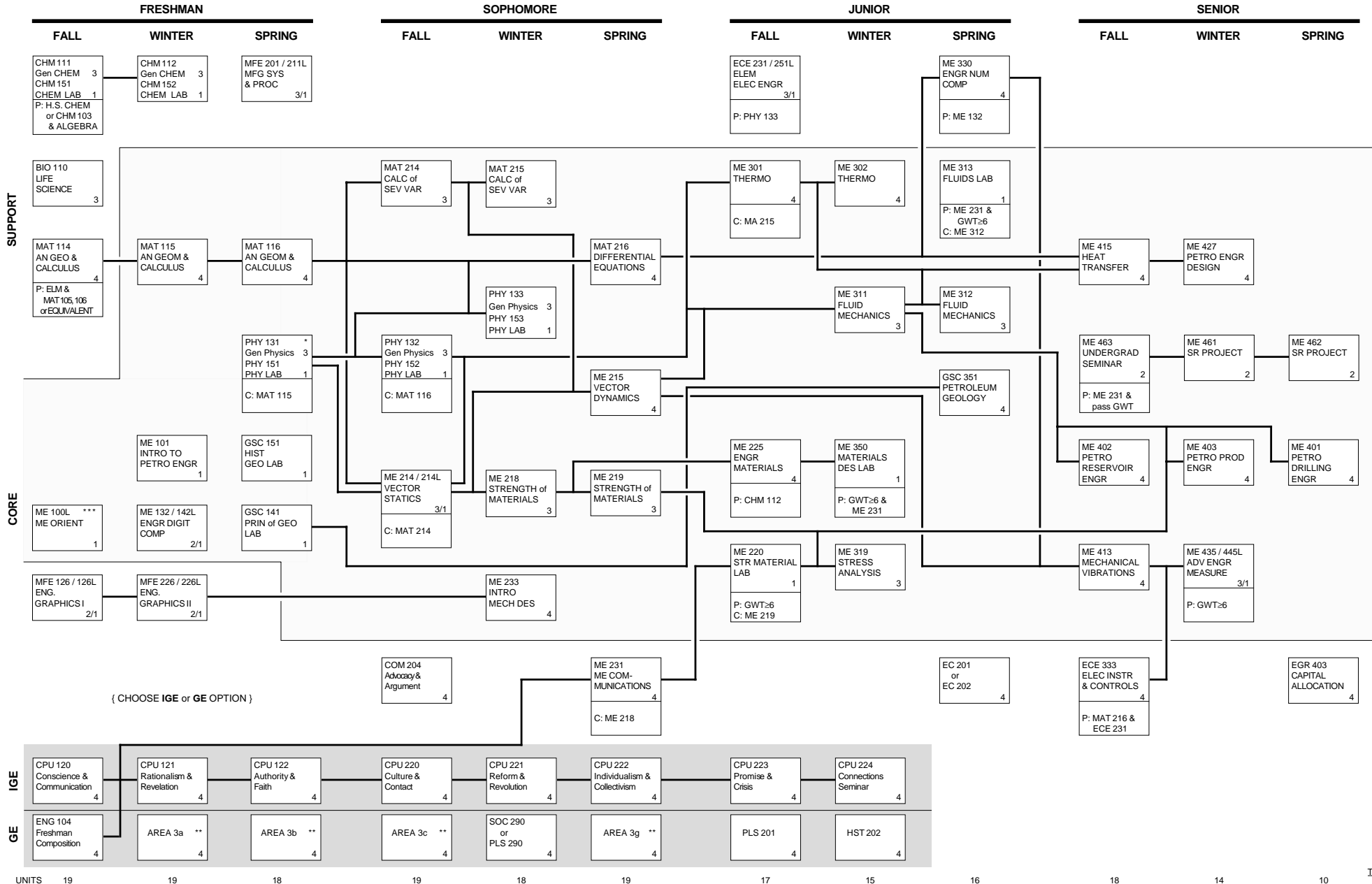
A. GENERAL EDUCATION. Students may fulfill these requirements at Cal Poly Pomona with the General Education (GE) or the Interdisciplinary General Education (IGE) Programs. Select courses from approved lists shown in the Schedule of Classes unless specified.

Table with 4 columns: Column I, Column I (con't), Column IIIa, and Column IIIb. It lists required courses, support and directed electives, and general education areas (AREA 1-5) with their respective unit requirements.

NOT MORE THAN 105 UNITS FROM A COMMUNITY COLLEGE NOR MORE THAN 36 UNITS OF EXTENSION WORK MAY BE APPLIED TOWARD A BACHELOR'S DEGREE. ALL SPEAKERS OF ENGLISH AS A SECOND LANGUAGE WHO HAVE NOT ACHIEVED THE MINIMUM EPT SCORE FOR ENGLISH 104 MUST TAKE ENGLISH 102 AND 103. A 2.0 CUMULATIVE GPA IS REQUIRED IN CORE COURSES INCLUDING OPTION COURSES IN ORDER TO RECEIVE A DEGREE IN THIS MAJOR.

CALIFORNIA STATE POLYTECHNIC UNIVERSITY, POMONA
MECHANICAL ENGINEERING DEPARTMENT
PETROLEUM ENGINEERING OPTION CURRICULUM
1996-97

COURSE
P: Prerequisite
C: Corequisite



* PHYSICS 131 SHOULD BE TAKEN NO LATER THAN SPRING QUARTER OF THE FRESHMAN YEAR
 ** SEE LISTS OF APPROVED COURSES IN THESE AREAS
 *** FRESHMAN AND TRANSFER STUDENTS SHOULD TAKE ME 100 DURING THE 1st FALL QUARTER AFTER ENTERING THE ME DEPARTMENT