



California State Polytechnic University, Pomona
Degree Curriculum Sheet

Plan (Major) **CONSTRUCTION ENGINEERING TECHNOLOGY**
Subplan/Option _____

Catalog Year **2009-2010**
Minimum Units Required **198**

Name _____
Student ID _____

Evaluator _____
GWT Satisfied _____ Yes _____ No

Required Core Courses		
Course		Units
<i>Students in this major are expected to maintain a GPA of at least 2.00 in all core courses.</i>		
Introduction to Construction Engineering Tech*	ETC 101	3
Construction Drafting I/Lab	ETC 130/130L	2/1
Construction Surveying I/Lab**	ETC 131/131L	2/2
Construction Surveying II/Lab	ETC 132/132L	2/2
Construction Drafting II/Lab	ETC 140/140L	2/1
Construction Materials	ETC 202	3
Construction Inspection	ETC 204	3
Construction Drawings & Spec/Lab	ETC 230/230L	1/2
Advanced Computer Applications & E-Const/Lab	ETC 250/250L	3/1
Electrical Installations/Lab	ETC 270/270L	3/1
Construction Cost Accounting/Lab	ETC 279/279L	2/1
Construction Estimating I	ETC 304	4
Construction Estimating II	ETC 305	4
Structural Theory	ETC 311	3
Construction Equipment & Methods	ETC 312	3
Timber & Formwork Design	ETC 315	4
Steel Design	ETC 316	3
Concrete & Masonry Design	ETC 317	3
Construction Cost Control	ETC 401	3
Contracts & Specifications	ETC 402	3
Construction Safety	ETC 403	3
Construction Planning & Scheduling	ETC 405	3
Construction Organization & Management	ETC 406	3
Foundations & Soil Mechanics/Lab	ETC 411/411L	3/1
Concrete Mix Design/Lab	ETC 431/431L	1/1
Undergraduate Seminar	ETT 460	2
Senior Project I & II***	ETT 461 & 462	2/2
*ETT 101/101L may be substituted for ETC 101		
**CE 134/134L may be substituted for ETC 131/131L		
***Approved Internships ETT 270, 470 may be applied as technical electives. See Academic Advisor.		
Total Units		88

Required Support Courses		
Course		Units
Applied Statics	ETT 210	3
Applied Strength of Materials/Lab	ETT 220/220L	3/1
Engineering Economics Analysis for ET	ETT 305	4
Applied Fluid Mechanics I/Lab	ETT 310/310L	3/1
College Physics/Lab (B1, B3)	PHY 121/121L	3/1
College Physics/Lab	PHY 122/122L	3/1
College Physics/Lab	PHY 123/123L	3/1
General Chemistry	CHM 121	3
General Chemistry Lab (B3)	CHM 121L	1
Technical Calculus (B4)	MAT 130	4
Technical Calculus	MAT 131	4
Total Units		39

Elective Support Courses		
Course		Units
Technical Electives		12
May include College Trigonometry Consult Department Advisor		
Total Units		12

General Education Requirements		IGE (G.E. Alternative)	
Area	Units		
Area A Communication & Critical Thinking	12	IGE 120	4
1 Oral Communication		IGE 121	4
2 Written Communication		IGE 122	4
3 Critical Thinking		IGE 220	4
Area B Mathematics & Natural Sciences	16	IGE 221	4
<i>Select at least one lab course from sub-area 1 or 2.</i>			
1 Physical Science		IGE 222	4
2 Biological Science		IGE 223	4
3 Laboratory Activity		IGE 224	4
4 Math/Quantitative Reasoning		Area A2	4
5 Science & Technology Synthesis		Area A3	4
Area C Humanities	16	Area B	16
1 Visual and Performing Arts		Area C1, C2, or C3	4
2 Philosophy and Civilization		Area C4	4
3 Literature and Foreign Language		Area D4	4
4 Humanities Synthesis			
Area D Social Sciences	20	See University Catalog for information on how IGE meets G.E. requirements.	
1 U.S. History, Constitution, American Ideals			
2 History, Economics and Political Science			
3 Sociology, Anthropology, Ethnic & Gender Studies			
4 Social Science Synthesis			
Area E Lifelong Understanding & Self Development	4		
Total Units	68		

American Institutions	Units
Courses that satisfy this requirement may also satisfy G.E. Area D1	8

American Cultural Perspectives Requirement	Units
Refer to catalog for list of courses that satisfy this requirement. Course may also satisfy major, minor, GE, or unrestricted elective requirements.	4

The following required support courses should be taken to satisfy the indicated GE Requirements to achieve the minimum units to degree listed at the top of this sheet.		
Course		GE Area
College Physics/Lab	PHY 121/121L	B1, B3
and General Chemistry Lab	CHM 121L	B3
Technical Calculus	MAT 130	B4
The remaining GE requirements may be satisfied by any course approved for that area.		

No more than 105 community college quarter units or 36 extension credit quarter units may be applied toward a Bachelor's degree.
A minimum 2.0 cumulative GPA is required in core (including option) courses, Cal Poly Pomona courses, and overall work completed in order to receive a degree in this major.

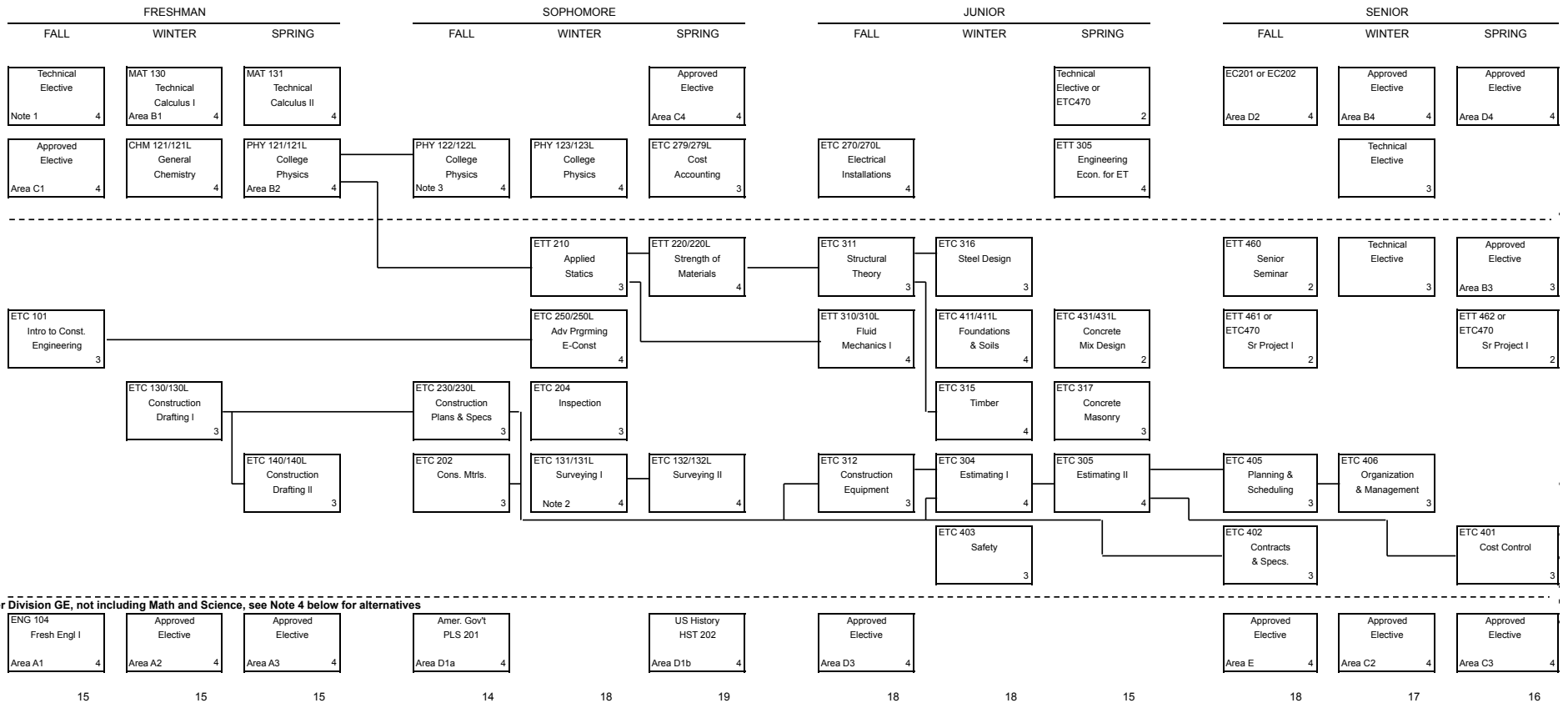
**CALIFORNIA STATE POLYTECHNIC UNIVERSITY, POMONA
CONSTRUCTION ENGINEERING TECHNOLOGY**

CURRICULUM FLOWSHEET

2009-10

NAME: _____

Academic Plan: ETC



Lower Division GE, not including Math and Science, see Note 4 below for alternatives

Notes

- May include College Trigonometry (MAT 106 at CPP) if taken before Calculus
- CE134/L maybe substituted for ETC131/L
- Lab course used to satisfy GE Area B2.
- An alternative GE pattern from that listed here, the Interdisciplinary Education Program (IGE), for partial fulfillment of GE Areas A, C and D is available for students in this major.

Although the IGE program tends to fit best for freshmen entering Cal Poly Pomona it is available to all students, see the University catalog or your advisor for more information.

- Approved Internships ETT270, 470 can only be applied as technical elective credit, see Academic Advisor for more details

This flowchart shows the suggested order of courses to complete the degree Bachelor of Science in Construction Engineering Technology in 4 years: 12 quarters not including summer quarters.

The flowchart is not a schedule however and when specific courses are offered (i.e. what quarter in a given year) depends on many factors including enrollment, faculty availability, on-going curricular changes and budgetary constraints.

Many courses (i.e. ETT210 and GE) are generally taught every quarter and can be taken whenever a student has completed the prerequisite coursework.

Most major courses (i.e. ETC130/L) are taught are taught once a year.

If you have concerns about when a course is to be offered next or any other course related questions you should contact your department advisor or the ET office (909-869-2492 or etdept@csupomona.edu).

Revised 11/26/2008

Total Units 198

**Engineering Technology Department
Construction Engineering Technology Major
Curriculum Year: 2009-2010**

Your department has developed this road plan, taking into account prerequisites and schedule restrictions.

You should pay attention to these concerns when deviating from this plan.

Year 1	Fall	Units	Winter	Units	Spring	Units	Comment
	ETC 101 Major Core	3	CHM 121/121L Major Support	4	ETC 140/140L Major Core	3	<i>Students in this major are expected to maintain a GPA of at least 2.00 in all core courses.</i>
	Technical Elective Major Support	4	ETC 130/130L Major Core	3	PHY 121/121L GE Area B2	4	
	ENG 104 GE Area A1	4	MAT 130 GE Area B1	4	MAT 131 Major Support	4	<i>MAT 130, PHY 121/21L, and PHY 122L satisfy both major and general education requirements</i>
	GE Area C1	4	Approved Elective GE Area A2	4	Approved Elective GE Area A3	4	
Total Units	15	Total Units	15	Total Units	15	<i>One course must be completed in each of the GE areas A2-3, B1-3, C1-3, D3, and E.</i>	
					Total Units for Year		45

Year 2	Fall	Units	Winter	Units	Spring	Units	Comment
	PHY 122 Major Support	3	PHY 123/123L Major Support	4	ETT 220/220L Major Support	4	
	ETC 202 Major Support	3	ETT 210 Major Support	3	ETC 132/132L Major Core	4	
	PHY 122L GE Area B2	1	ETC 131/131L Major Core	4	ETC 279/279L Major Core	3	
	ETC 230/230L Major Core	3	ETC 204 Major Core	3	HST 202 GE Area D1b	4	
	PLS 201 GE Area D1a	4	ETC 250/250L Major Core	4	Approved Elective GE C3	4	
Total Units	14	Total Units	18	Total Units	19		
					Total Units for Year		51

Year 3	Fall	Units	Winter	Units	Spring	Units	Comment
	ETT 310/310L Major Support	4	ETC 317 Major Core	3	Tech Elective or ETC 470	2	
	ETC 270/270L Major Core	4	ETC 316 Major Core	3	ETC 305 Major Core	4	
	ETC 311 Major Core	3	ETC 403 Major Core	3	ETC 315 Major Core	4	
	ETC 312 Major Core	3	ETC 411/411L Major Core	4	ETC 431/431L Major Core	2	
	EC 201 or EC 202 GE area D2	4	ETC 304 Major Core	4	ETC 305 Major Core	4	
	<i>Take the Graduation Writing Test</i>						
Total Units	18	Total Units	17		16		
					Total Units for Year	51	

Year 4	Fall	Units	Winter	Units	Spring	Units	Comment
	ETT 460 Major Core	2	ETC 406 Major Core	3	ETC 401 Major Core	3	<i>Department approval required for selection of GE Synthesis Area B4.</i> <i>All GE Area A courses and all lower division GE courses in a GE area must be completed before taking the GE Synthesis course in that area.</i>
	ETT 461	2	Technical Elective Major Support	3	ETT 462 Major Core	2	
	GE Area E	4	GE Area C2	4	GE Area Synthesis D4	4	
	ETC 402 Major Core	3			GE Synthesis C4	4	
	ETC 405 Major Core	3	GE Synthesis B3	3	GE Synthesis Area B4	4	
	GE Area D2	4	Technical Elective Major Support	3			
			<i>Request a graduation check</i>		<i>File an application to graduate</i>		
Total Units	18	Total Units	16	Total Units	17		
					Total Units for Year	51	
Total Units on Plan						198	
Major Core Units						88	
Major Support Units						42	
General Education Units						68	

Unrestricted Elective Units	0	
------------------------------------	----------	--