



DEGREE REQUIREMENT EVALUATION

ELM Satisfied ___ Yes ___ No
EPT Satisfied ___ Yes ___ No
GWT Satisfied ___ Yes ___ No

California State Polytechnic University, Pomona

YEAR: 1997-98

MAJOR CIVIL ENGINEERING (5253)
OPTION Surveying Engineering
UNITS REQUIRED 202

NAME LAST FIRST M.I.
STUDENT ID NO.

EVALUATOR
DATE
UPDATES

Students in this major are expected to achieve and maintain a GPA of at least 2.00 in all courses included in Column I.

A. GENERAL EDUCATION. Students may fulfill these requirements at Cal Poly Pomona with the General Education (GE) or the Interdisciplinary General Education (IGE) Programs. Select courses from approved lists shown in the Schedule of Classes unless specified.

Table with 4 columns: Column I, Column I (con't), Column IIIa, and Column IIIb. It lists various engineering courses, general education requirements, and transfer electives with their respective unit counts.

NOT MORE THAN 105 UNITS FROM A COMMUNITY COLLEGE NOR MORE THAN 36 UNITS OF EXTENSION WORK MAY BE APPLIED TOWARD A BACHELOR'S DEGREE. ALL SPEAKERS OF ENGLISH AS A SECOND LANGUAGE WHO HAVE NOT ACHIEVED THE MINIMUM EPT SCORE FOR ENGLISH 104 MUST TAKE ENGLISH 102 AND 103. A 2.0 CUMULATIVE GPA IS REQUIRED IN CORE COURSES INCLUDING OPTION COURSES IN ORDER TO RECEIVE A DEGREE IN THIS MAJOR. F-105-16 REV. 2/97

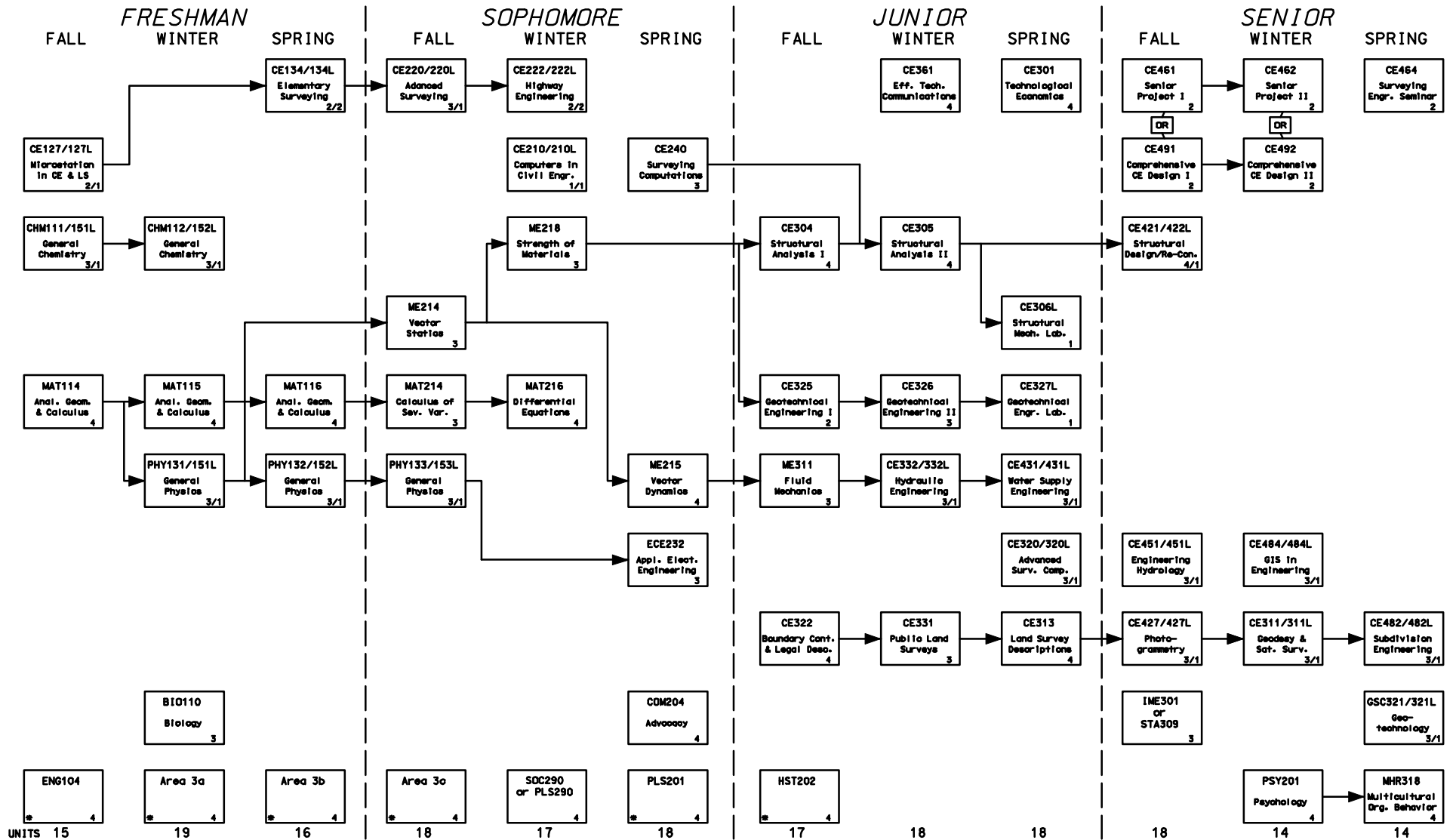
CALIFORNIA STATE POLYTECHNIC UNIVERSITY POMONA

CIVIL ENGINEERING DEPARTMENT CURRICULUM

AY 97-98

SURVEYING ENGINEERING OPTION

NAME: _____ DATE: __/__/__



Students are responsible for prerequisites. Refer to University Catalog 1997-98.

* Qualified students may substitute IGE sequence for courses with asterisk. See University Catalog.

TOTAL = 202
Revision 9/01/96