

**Civil Engineering Department
Civil Engineering Major
Geospatial Engineering Option
Curriculum Year: 2006-2007**

*Your department has developed this road plan, taking into account prerequisites and schedule restrictions.
You should pay attention to these concerns when deviating from this plan.*

		Fall	Units	Winter	Units	Spring	Units	Comment
Year 1		CE 127/127L Major Core	3	CHM 122/122L Major Support	4	CE 134/134L Major Core	4	<i>Students in this major are expected to maintain a GPA of at least 2.00 in all core courses. MAT 114, PHY 131/131L and PHY 132L satisfy both major and general education requirements</i>
		CHM 121/121L Major Support	4	MAT 115 Major Support	4	MAT 116 Major Support	4	
		MAT 114 GE Area B1	4	PHY 131/131L GE Area B2	4	PHY 132 Major Support	3	
		ENG 104 GE Area A1	4	ENG 105 GE Area A3	4	PHY 132L GE Area B2	4	
					COM 204 GE Area A2	4		
		Total Units	15	Total Units	16	Total Units	16	
							Total Units for Year	47
<hr/>								
		Fall	Units	Winter	Units	Spring	Units	Comment
Year 2		CE 220/220L Major Core	4	CE 222/222L Major Core	4	CE 240 Major Core	3	<i>Upper division CE courses must be approved in advance by your advisor. One course must be completed in each of the GE areas A2-3, B1-3, C1-3, D3, and E.</i>
		ME 214 Major Core	3	ME 218 Major Core	3	ME 215 Major Core	4	
		MAT 214 Major Support	3	MAT 216 Major Core	4	CE 305 Major Core	4	
		PHY 133/133L Major Support	4	CE 301 GE Area D2	4	PLS 201 GE Area D1	4	
		GE Area Any approved course in area B3, C1-3, D3, or E	4	HST 202 GE Area D1	4	GE Area Any approved course in area B3, C1-3, D3, or E	4	
		Total Units	18	Total Units	19	Total Units	19	
							Total Units for Year	56

	Fall	Units	Winter	Units	Spring	Units	Comment
	CE 304 Major Core	4	CE 362/362A Major Core	3	CE 313 Major Core	4	
	CE 325 Major Core	2	CE 326 Major Core	3	CE 306L Major Core	1	
	ME 311 Major Core	3	CE 332/332L Major Core	4	CE 327L Major Core	1	
	EGR 322 GE Area D4	4	CE 331 Major Core	3	CE 431/431L Major Core	4	
	CE 311/311L Major Core	4	GE Area Any approved course in area B3, C1-3, D3, or E	4	EGR 322 GE Area D4	4	
	<i>Take the graduation writing test</i>						
	Total Units	17	Total Units	17	Total Units	14	
						Total Units for Year	48

	Fall	Units	Winter	Units	Spring	Units	Comment
Year 4	CE 421/422L Major Core	5	CE 451/451L Major Core	4	EGR 402 GE Area C4	4	<i>All GE Area A courses and all lower division GE courses in a GE area must be completed before taking the GE Synthesis course in that area.</i>
	CE 427/427L Major Core	4	CE 491,492,493 Major Core	4	CE 482/482L Major Core	4	
	IME 301 or STA 309 Major Support	3	CE 484/484L Major Core	4	GSC 321/321L GE Area B4	4	
	GE Area Any approved course in area B3, C1-3, D3, or E	4	GE Area Any approved course in area B3, C1-3, D3, or E	4	GE Area Any approved course in area B3, C1-3, D3, or E	4	
				<i>Request a graduation check</i>		<i>File an application for graduation</i>	
	Total Units	16	Total Units	16	Total Units	16	
						Total Units for Year	48

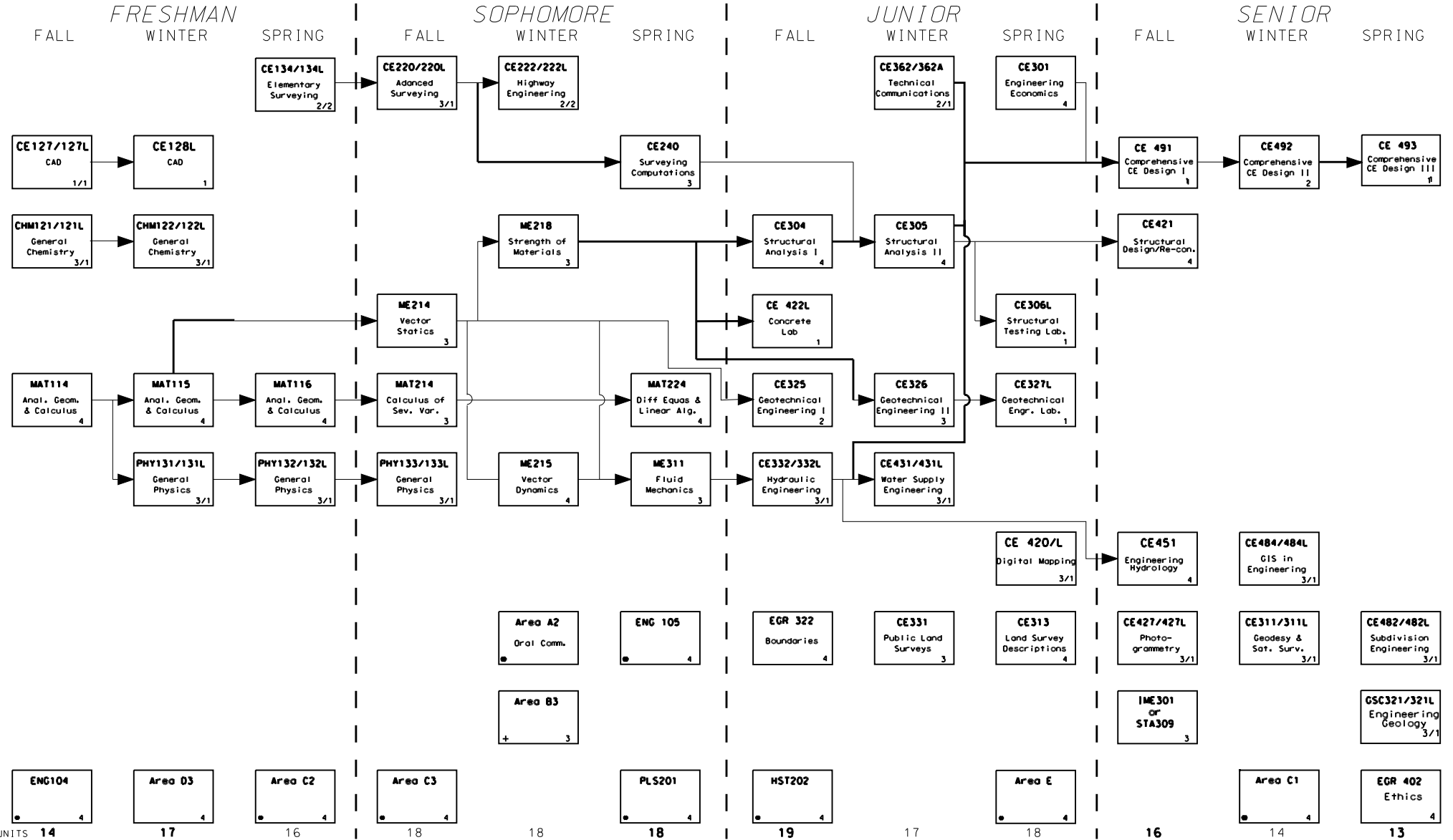
Total Units on Plan	198
Major Core Units	97
Major Support Units	33
General Education Units	68
Unrestricted Elective Units	0

CALIFORNIA STATE POLYTECHNIC UNIVERSITY POMONA CIVIL ENGINEERING DEPARTMENT CURRICULUM

AY
2006/2007

GEOSPATIAL ENGINEERING OPTION

NAME: _____ DATE: __/__/__



UNITS 14 17 16 18 18 19 17 18 16 14 13

Students are responsible for prerequisites. Refer to the current University Catalog. Some prerequisites are not shown on this chart

* Qualified students may substitute IGE sequence for courses with asterisk. See University Catalog.

Course must be approved in advance by advisor

TOTAL = 198
Revision 3/09/06