



**California State Polytechnic University, Pomona
DEGREE REQUIREMENT EVALUATION**

ELM Satisfied ___ Yes ___ No
 EPT Satisfied ___ Yes ___ No
 GWT Satisfied ___ Yes ___ No

MAJOR (PLAN) **CIVIL ENGINEERING** NAME _____
 OPTION/EMPHASIS (SUB-PLAN) **Geospatial Engineering** LAST _____ FIRST _____ MI _____
 UNITS REQUIRED **198** STUDENT I.D. # _____

TERM ADMITTED _____ YEAR: **2005-2006**
 EVALUATOR _____
 DATE _____
 UPDATES _____

CORE COURSES	Units	SUPPORT COURSES	Units	IGE	GENERAL EDUCATION	Units
<i>Students in this major are expected to maintain a GPA of at least 2.00 in all core courses.</i>					GENERAL EDUCATION. Students may fulfill these requirements at Cal Poly Pomona with the General Education (GE) or the Interdisciplinary General Education (IGE) Programs. Select courses from approved lists shown in the Schedule of Classes unless specified.	
					GENERAL EDUCATION COURSES	Units
CAD Engine Concepts	CE 127/L 3	Gen Chemistry	CHM 121/L 4	IGE 120 4	Area A Communication and Critical Thinking–12 units	
Elem Surveying	CE 134/L 4	Gen Chemistry	CHM 122/L 4	IGE 121 4	1 ENG 104	4
Structural Anal I	CE 304 4	Anal Geom/Calc II	MAT 115 4	IGE 122 4	2 Oral Communication	4
Structural Anal II	CE 305 4	Anal Geom/Calc III	MAT 116 4	IGE 220 4	3 ENG 105	4
Structural Mat Lab	CE 306L 1	Calc of Several Vari I	MAT 214 3	IGE 221 4		
Geotech Engr I	CE 325 2	Differential Equations	MAT 216 4	IGE 222 4	Area B Math and Natural Sciences–16 units	
Geotech Engr II/Lab	CE 326 3	Differential Equations	MAT 216 4	IGE 223 4	1 MAT 114	4
Geotech Lab	CE 327L 1	General Physics	PHY 132 3	IGE 224 4	2 PHY 131/131L, 132L	5
Hydraulic Engr	CE 332/L 4	General Physics	PHY 133/L 4	COM 204 4	3 Biological Science	3
Technical Communication	CE 362/A 3	Statistical Methods	IME 301 3	CE 301 4	4 GSC 321/321L	4
Str. Des-Rein Conc	CE 421 4		or STA 309	ENG 105 4		
Concrete Design Lab	CE 422L 1			Area B 16	Area C Humanities– 16 units	
Water Supply Engr	CE 431/L 4			Area C4 4	1 Fine/Performing Arts	4
Vector Statics	ME 214 3			Area D4 4	2 Philosophy and Civilization	4
Vector Dynamics	ME 215 4				3 Literature and Foreign Language	4
Strength Matls	ME 218 3				4 EGR 402	4
Fluid Mechanics	ME 311 3				Area D Social Sciences– 20 units	
					1 PLS 201, HST 202	8
<u>REQUIRED OPTION COURSES</u>					2 CE 301	4
Advanced Surveying	CE 220/L 4				3 Sociology, Anthropology, Ethnic & Gender Studies	4
Highway Engr Des	CE 222/L 4				4 EGR 322	4
Surveying Computations	CE 240 3				Area E Lifelong Understanding and Self-Development–4 units	
Geodetic Satellite Surv	CE 311/L 4					4
Land Surv Des	CE 313 4					
Pub Land Surv	CE 331 3					
Digital Mapping	CE 420/L 4					
Photogrammetry	CE 427/L 4					
Engr Hydrology	CE 451/L 4					
Design Project	CE 491, 492, 493 4	SUMMARY OF ADVANCED STANDING CREDIT: Earned Hours _____ G.P.A. Hours _____ Quality Points _____ G.P.A. _____				
Subdivision Engr	CE 482/L 4					
GIS in Engineering	CE 484/L 4					
UNITS REQUIRED:	97	UNITS REQUIRED:	33	UNITS REQUIRED:	68	

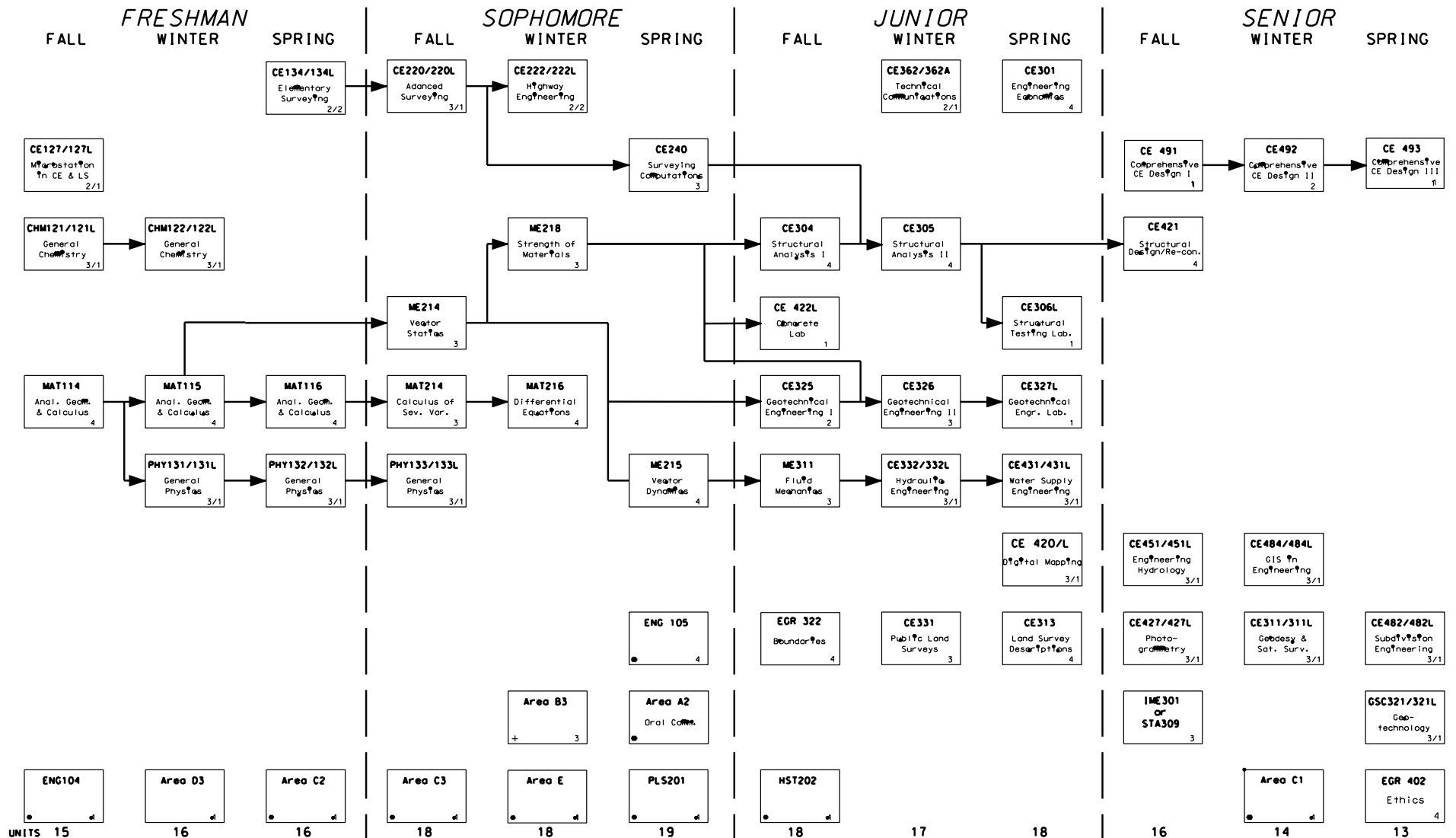
NOT MORE THAN 105 UNITS FROM A COMMUNITY COLLEGE NOR MORE THAN 36 UNITS OF EXTENSION WORK MAY BE APPLIED TOWARD A BACHELOR'S DEGREE.
 A 2.0 CUMULATIVE GPA IS REQUIRED IN CORE COURSES INCLUDING OPTION COURSES IN ORDER TO RECEIVE A DEGREE IN THIS MAJOR.

CALIFORNIA STATE POLYTECHNIC UNIVERSITY POMONA CIVIL ENGINEERING DEPARTMENT CURRICULUM

AY
2005/2006

GEOSPATIAL ENGINEERING OPTION

NAME: _____ DATE: __/__/__



Students are responsible for prerequisites. Refer to the current University Catalog. Some prerequisites are not shown on this chart

* Qualified students may substitute IGE sequence for courses with asterisk. See University Catalog.

Course must be approved in advance by advisor

TOTAL = 198

Revision 4/04/2005