



**California State Polytechnic University, Pomona
DEGREE REQUIREMENT EVALUATION**

YEAR: 2000-2001

MAJOR CIVIL ENGINEERING (5251)
General Civil Engineering

NAME _____ LAST _____ FIRST _____ MI _____

UNITS REQUIRED 202 STUDENT I.D. # _____

GENERAL EDUCATION. Students may fulfill these requirements at Cal Poly Pomona with the General Education (GE) or the Interdisciplinary General Education (IGE) Programs. Select courses from approved lists shown in the Schedule of Classes unless specified.

CORE COURSES	Units	Course Taken	Grade	SUPPORT COURSES	Units	Course Taken	Grade	IGE	Units	Course Taken	Grade	GENERAL EDUCATION COURSES	Units	Course Taken	Grade
<i>Students in this major are expected to achieve and maintain a GPA of at least 2.00 in all core courses.</i>				<u>SUPPORT AND DIRECTED ELECTIVES</u>				IGE 120	4			Area 1 Comm in Eng Lang – 12 units			
CAD Engine Concepts	CE 127/L	3		Gen Chemistry	CHM 121/L	4		IGE 121	4			1a ENG 104	4		
Elem Surveying	CE 134/L	4		Gen Chemistry	CHM 122/L	4		IGE 122	4			1b COM 204	4		
Computers in CE	CE 210/L	2		Anal Geom/Calc II	MAT 115	4		IGE 220	4			1c CE 361/L or ENG 105	4		
Structural Anal I	CE 304	4		Anal Geom/Calc III	MAT 116	4		IGE 221	4			Area 2 Science/Math – 16 units			
Structural Anal II	CE 305	4		Calc of Several Vari I	MAT 214	3		IGE 222	4			2a MAT 114	4		
Structural Mat Lab	CE 306L	1		Differential Equations	MAT 216	4		IGE 223	4			2b PHY 131, 131L, 132L, 133L	6		
Geotech Engr I	CE 325	2		General Physics	PHY 132	3		IGE 224	4			2c Elective	3		
Geotech Engr II	CE 326	3		General Physics	PHY 133	3		COM 204	4			2d IME 301 or STA 309	3		
Geotech Lab	CE 327L	1						CE 361/L or	4			Area 3 Humanities/Social Sciences – 24 units			
Hydraulic Engr	CE 332/L	4						ENG 105				3a Elective	4		
Str. Des-Rein Conc	CE 421	4						<u>CE 301</u>	4			3b Elective	4		
Concrete Design Lab	CE 422L	1						EC 201/202	4			3c Elective	4		
Water Supply Engr	CE 431/L	4						Area 2	16			3d CE 301	4		
Applied Elect Engr	ECE 232	3						Area 5	8			3e,f PLS 390/SOC 390*	4		
Vector Statics	ME 214	3										3g Elective	4		
Vector Dynamics	ME 215	4										Area 4 US Hst/Const/Ideals – 8 units			
Strength Matls	ME 218	3										4a PLS 201	4		
Fluid Mechanics	ME 311	3										4b HST 202	4		
												Area 5 Upper Division GE – 8 units			
												<u>GSC 321</u>	4		
												<u>MHR 318 or EGR 402</u>	4		
												*Course satisfies two requirements.			
												Underlined courses satisfy both major and general education requirements.			
SUMMARY OF ADVANCED STANDING CREDIT:															
Earned Hours _____															
G.P.A. Hours _____															
Quality Points _____															
G.P.A. _____															
ELM Satisfied ____ Yes ____ No															
EPT Satisfied ____ Yes ____ No															
GWT Satisfied ____ Yes ____ No															
EVALUATOR _____															
DATE _____															
UPDATES _____															
UNITS REQUIRED:	105	UNITS REQUIRED:					29	UNITS REQUIRED:					68		

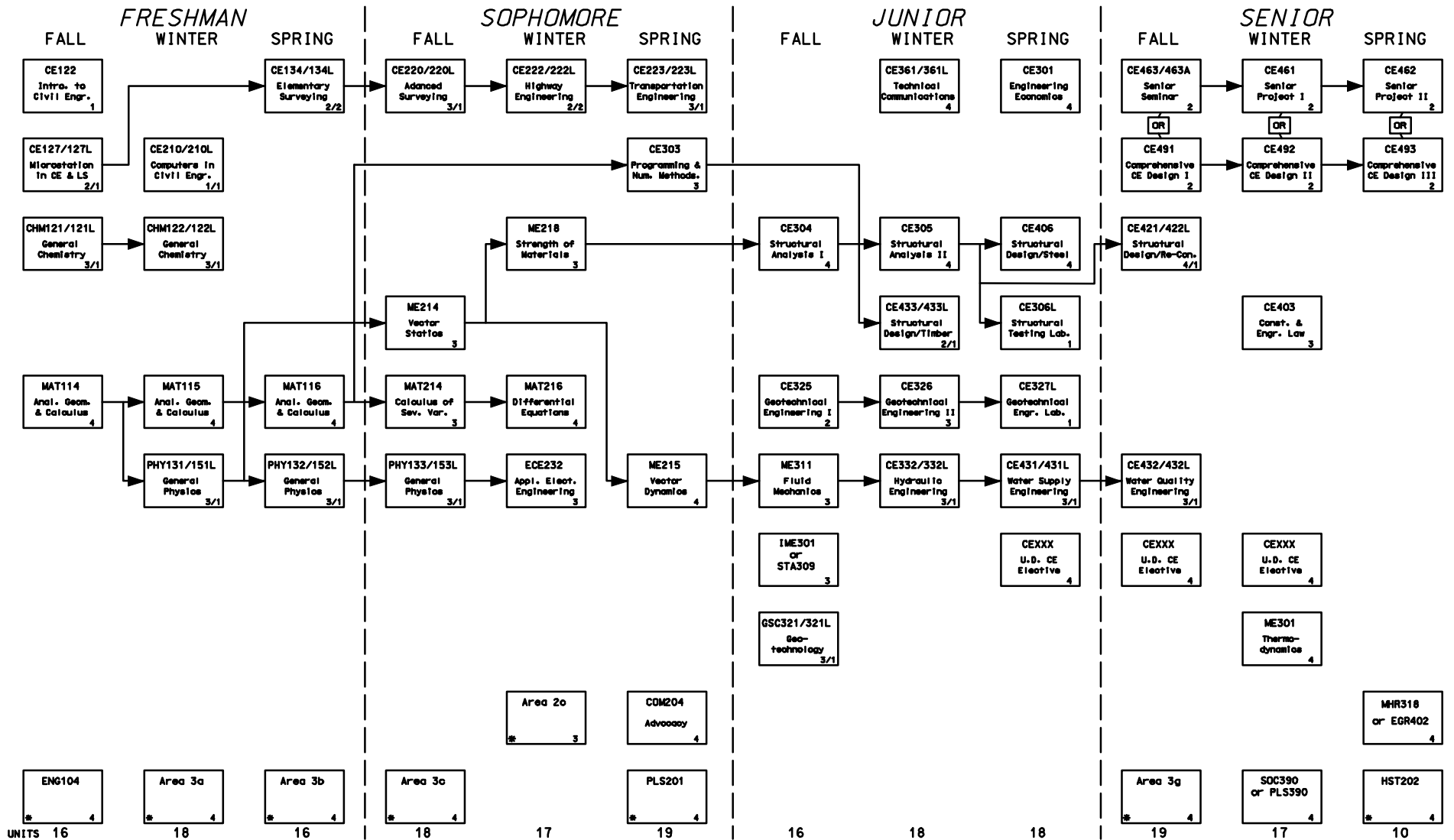
NOT MORE THAN 105 UNITS FROM A COMMUNITY COLLEGE NOR MORE THAN 36 UNITS OF EXTENSION WORK MAY BE APPLIED TOWARD A BACHELOR'S DEGREE.
A 2.0 CUMULATIVE GPA IS REQUIRED IN CORE COURSES INCLUDING OPTION COURSES IN ORDER TO RECEIVE A DEGREE IN THIS MAJOR.

CALIFORNIA STATE POLYTECHNIC UNIVERSITY POMONA CIVIL ENGINEERING DEPARTMENT CURRICULUM

AY
2000/2001

GENERAL CIVIL ENGINEERING OPTION

NAME: _____ DATE: __/__/__



Students are responsible for prerequisites. Refer to the current University Catalog.

* Qualified students may substitute IGE sequence for courses with asterisk. See University Catalog.

TOTAL = 202
Revision 10/25/1999