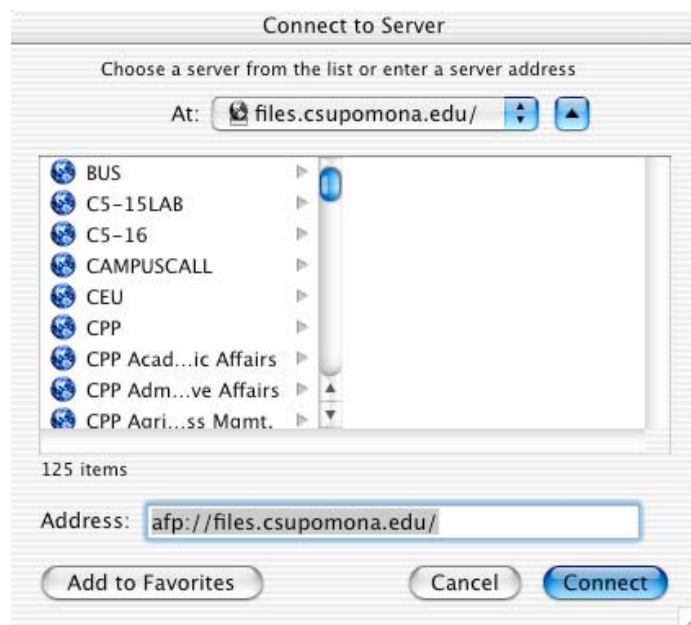


Mac SSH Client

Installing & Using MacSSH for Mac OS 9.x.x or lower

1. Download MacSSH Client by Mounting an Apple Share. On to the top menu and click on Go > Connect to Server
2. In Address field type in “afp://ftp.csupomona.edu/” then click on the Connect button.



3. Type in your Intranet/ Email username and password. If you get an error message about the length of your password you can click on OK and ignore it. This will only appear if your password is over 6 characters.



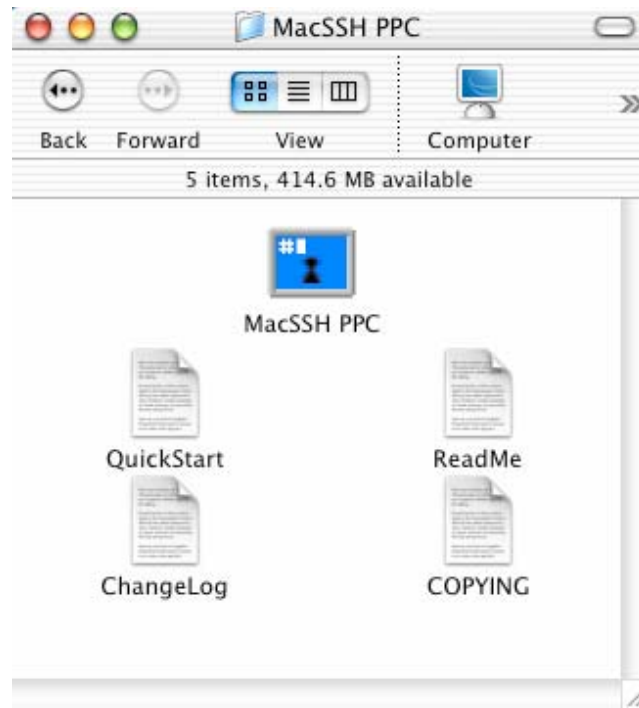
4. You will get a window stating “select the volumes you wish to mount” you should select “Licensed MacOS Software” and then click on OK



5. An Apple Share will then be displayed on your desktop that says “Licensed MacOS Software” and will look like a picture of a Globe on top of a Hard Drive.

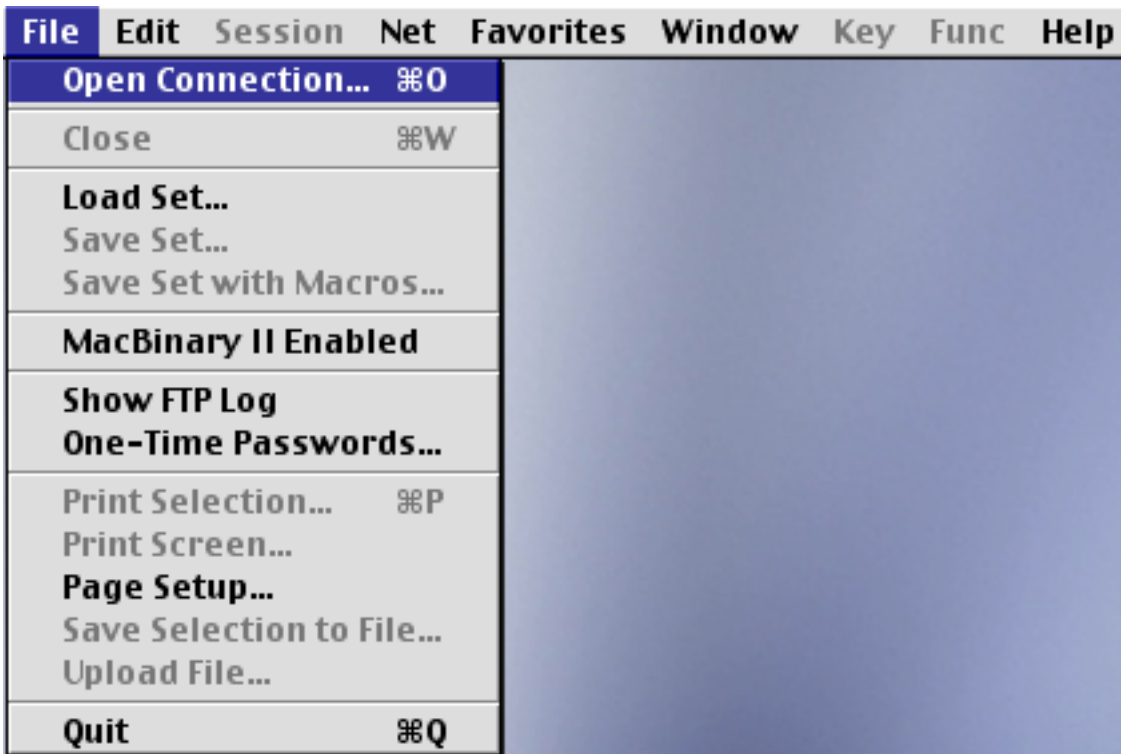


6. Click on this Icon and go into the “csupomona” folder and then into the “MacSSH PPC” folder. In the folder find the file “MacSSH PPC” and drag it to your desktop

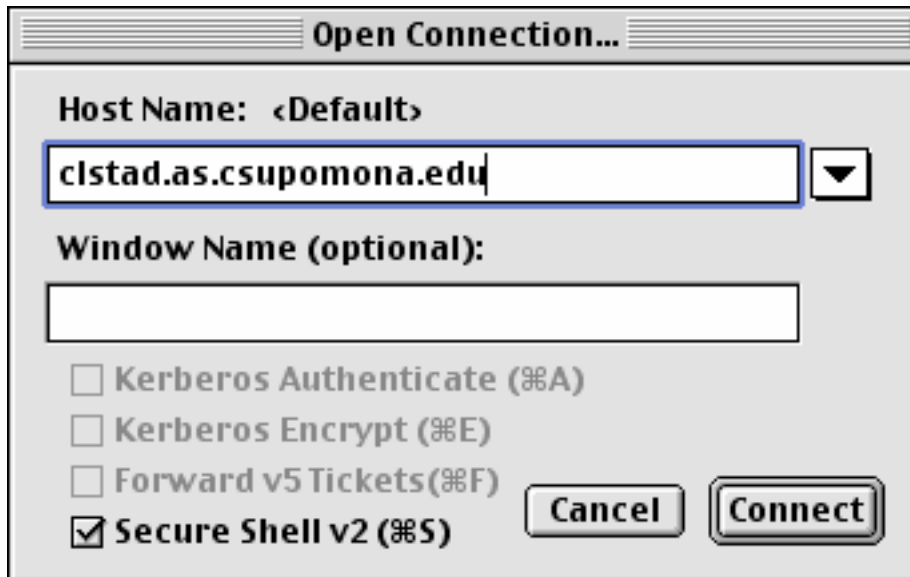


Using MacSSH PPC

1. Click on the MacSSH PPC Icon on your desktop. If you're running OS X then OS 9 will automatically open in order to run the program.
2. Once the program is open go to menu at the top of the screen and click on File > Open Connection



3. For Host Name type in “clstad.as.csupomona.edu”, then click on Connect



Open Connection...

Host Name: <Default>

clstad.as.csupomona.edu

Window Name (optional):

Kerberos Authenticate (⌘A)

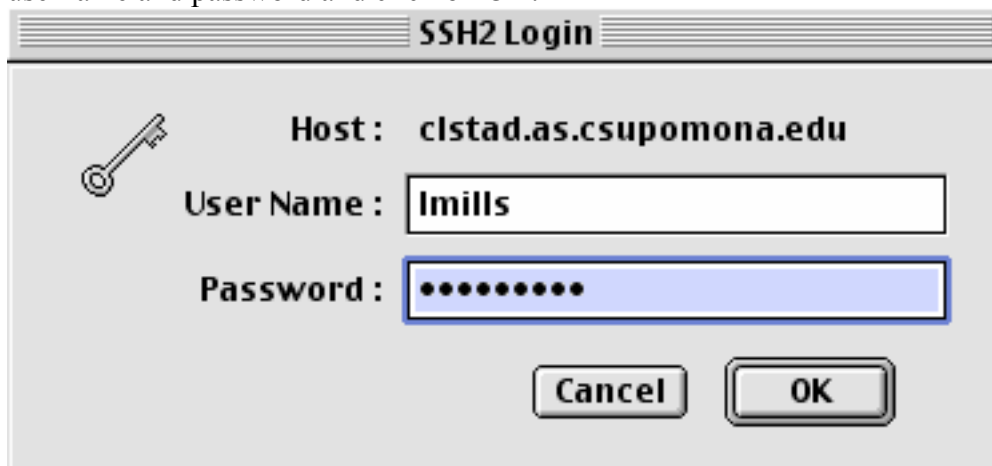
Kerberos Encrypt (⌘E)

Forward v5 Tickets(⌘F)

Secure Shell v2 (⌘S)

Cancel Connect

4. Next the SSH2 Login will appear. Then enter your Banner/ Administrative username and password and click on OK.



SSH2 Login

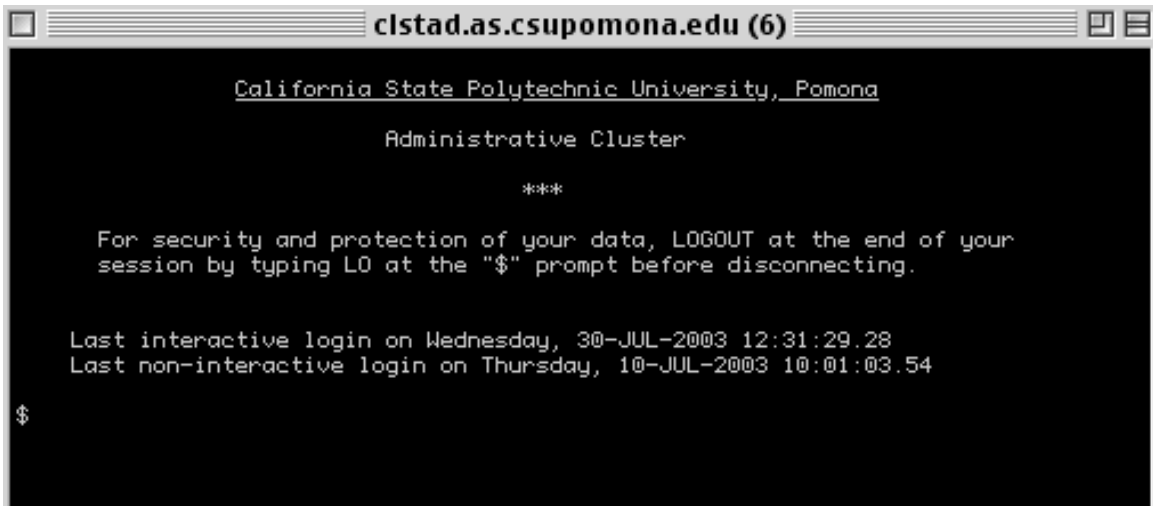
Host: clstad.as.csupomona.edu

User Name: lmills

Password: ●●●●●●●●

Cancel OK

5. You are not logged into the Cal Poly Pomona Administrative Cluster and can type commands at the dollar prompt.



```
clstad.as.csupomona.edu (6)
California State Polytechnic University, Pomona
Administrative Cluster
***
For security and protection of your data, LOGOUT at the end of your
session by typing LO at the "$" prompt before disconnecting.

Last interactive login on Wednesday, 30-JUL-2003 12:31:29.28
Last non-interactive login on Thursday, 10-JUL-2003 10:01:03.54
$
```