



Center Recognized by Air Quality Agency

Last fall the Lyle Center was honored by the South Coast Air Quality Management District (AQMD) with one of their “Clean Air Awards” for 2005. The awards honor innovative thinking, creativity, hard work and determination in making outstanding contributions toward improving air quality in Southern California. The Center was the only winner recognized in the category of “Model Community Achievement.” In issuing the award, AQMD noted the Center’s demonstration and education related to various regenerative strategies, including low-energy architecture, renewable energy and waste management.

Center Director **Dr. Kyle D. Brown** and Project Coordinator **Deborah Scheider** attended a banquet at the Los Angeles Convention Center in October, to receive the award on behalf of the Center. Approximately 500 people were in attendance, in-

Award Continued on Page 4



Students from Lincoln Elementary in Pomona enjoyed Earth Day at the Center.

Three MSRS Students Receive Boeing Scholarships for 2005-06

The Boeing Company is supporting three students in the Center’s Master of Science program through their scholarship program this academic year. **Jason Selwitz, Matty West, and Eric Zentmyer** each recently received the scholarship award which was administered by faculty of the MSRS program. The Boeing Company supports excellent students who are self starters, leaders, team players and multi-disciplined. Applicants needed to demonstrate a commitment to regenerative studies as well as the desire and ability to address environmental challenges facing society in the 21st century.

Jason Selwitz is a first-year MSRS student focusing on wetland plants, bacteria, and microalgae to treat human wastewater. Funds will be used to purchase equipment



MSRS Boeing Scholars: from left, Matty West, Jason Selwitz, and Eric Zentmyer.

and testing supplies for experiments related to his thesis. Long-range plans include international consulting on water treatment systems.

Matty West is a first-year MSRS student studying the design of energy efficient building systems, and has been active in *Habitat 21*’s affordable housing project (see page 2). The scholarship will support the purchase of technology and materials to construct building prototypes. Matty is in-

Boeing Scholars Continued on Page 4

Earth Day, 2006 A Big Success

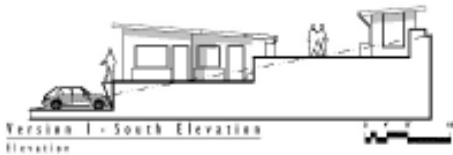
Educational programs for school children, hands-on workshops for adults, demonstrations of regenerative technologies, lectures, and live entertainment characterized this year’s Earth Day celebration at the Lyle Center. An estimated 400 people attended the all-day event on April 21st. The Green Team, the Center-sponsored student environmental club, organized the event.

Children were the focus of a number of activities. The Green Team received a grant

from the Inter-Hall Council to cover transportation costs, allowing 140 students from Lincoln Elementary School in Pomona to attend. School groups from Long Beach were also in attendance. Children were given tours of the Center, opportunities to paint pots and plant seedlings, and participate in a May pole dance.

A number of workshops were led by MSRS students and Lyle Center faculty, including Bio-diesel production, organic gar-

Earth Day Continued on Page 2



Habitat 21 Continues Work on Tijuana Prototype

The housing concept developed by students Kristian Whitsett (ARC) and Kim Wehinger (LAND ARC) is the basis of the prototype being developed by Habitat 21.

Earth Day from page 1

dening, seed-saving, sheet composting, alternative vehicles and alternative building. Numerous vendors displayed various regenerative technologies, including photovoltaics for solar energy production, and volunteers from the South-Central Farm, a large community garden in Los Angeles, were on-hand to discuss their efforts at preserving urban farming.

Jesse Marquez, an environmental activist from the *Coalition for a Safe Environment* provided the keynote address. Marquez urged the audience to remember that individual efforts can affect change, though they are more effective when done in concert with local communities and environmental justice groups.

The event also featured plenty of live entertainment, including Peruvian folk dancing organized by Center resident and landscape architecture student, **Sonia Noriega**. In the evening, the Sugar Mountain Mama Serenade took center stage with a mixture of puppetry and music that tantalized the audience of all ages.

Earth Day was first celebrated on April 22nd, 1970. Senator Gaylord Nelson (D-WI) took a leading role in organizing the celebration, to demonstrate political support for an environmental agenda. The Lyle Center has frequently honored Earth Day with a community celebration. Thanks to the Green Team for all your hard work in making this event such a success.

Work continues on the design of a sustainable housing prototype for Tijuana, Mexico, under the direction of **Dr. Kyle D. Brown, Dr. Pablo La Roche, and Professor Irma Ramirez**. In Winter quarter, an architecture class taught by La Roche and Ramirez developed plans for a conceptual prototype. Emphasis was placed on achieving thermal comfort for the residents, stabilizing building sites, minimizing material cost, and maximizing construction efficiency. Students from both architecture and landscape architecture programs participated in the class.

This spring, two architecture classes, taught by Ramirez and La Roche, have been refining the design, developing construction details, and constructing a temporary prototype of the shelter at the Center. The construction effort is being coordinated by MSRS students, Jonah Swick and Matty West, and has included volunteers from the residential community at the Center as well as students in the College of Environmental Design.

Upon completion of the prototype, its thermal performance will be thoroughly evaluated, along with its durability and feasibility for construction in Tijuana. Several design modifications may change as a result of this testing process.



MSRS Student Doug Kent (in hat) gives a tour to a group of students from Lincoln Elementary in Pomona.



Children danced around the May Pole accompanied by Lyle Center Site Technician, Juan Araya, on the drums.



Earth Day keynote speaker Jesse Marquez (left) with representatives from the South Central Farm.



Peruvian folk dancing entertained the Earth Day crowd.

Lyle Center News and Notes

The College of Environmental Design will be holding its commencement on June 11, 2006. For the first time, MSRS students will be participating as members of our inaugural class will be receiving their degrees.....Students in Art instructor **Joyce Hesselgrave's** mosaic classes have been hard at work this year, preparing tiles for a mosaic that will be installed in the amphitheater at the Lyle Center this summer. Hesselgrave designed the mosaic, composed largely of donated and recycled materials.....Students in **Professor Babette Mayor's** graphic design course aided the Green Team in designing posters advertising the Earth Day celebration held at the Center in April (see story, page 1). Approximately 25 different posters were designed, accompanied by books about environmental issues. The students' work was displayed up at the Center on Earth Day. **John Custodio's** poster was used by the Green Team to advertise the event....**Professor**

Charlene Teters, the LaBounty Chair for Interdisciplinary Applied Studies, organized two recent lectures up at the Center. **Den- nis Banks**, a Native American leader and activist, spoke in February in conjunction with the "Sacred Run" from Alcatraz to the Lincoln Memorial, which he organized. **Floyd Red Crow Westerman**, a Native American activist and actor, spoke in April about his perspective on the current immigration debate. Westerman also entertained the crowd with his singing.....Students in **Lori Pullman's** Environmental Land Art class are installing art pieces throughout the Center. Work should be completed by the end of spring quarter and the pieces will remain on display for several weeks. The Lyle Center sponsors institutional membership for the Cal Poly Pomona community in the US Green Building Council. Faculty and staff may utilize this membership in seeking LEEDs training or certification. The Center also partners with the College of En-

gineering in sponsoring institutional membership in the National Collegiate Inventors and Innovators Alliance. As an institutional member, faculty and staff can pursue grants through the NCIIA. Contact the Center for more information about how to benefit from these memberships.....Lyle Center Faculty Fellow, **Dr. Terry Young**, presented a paper at the Association of American Geographers annual conference in Chicago this past March.....Lyle Center Director, **Dr. Kyle D. Brown**, recently gave papers at the Association of American Geographers conference, and the Municipal Society of the Green Building Council Expo in Downey, CA. Dr. Brown also spoke about the Center at the Pilgrim Place retirement community in Claremont, at the invitation of **Dr. Dean Freudenberger**, a Lyle Center Advisory Board Member.....the Mediterranean Fruit Fly quarantine has been lifted, so fruit is once again available at the Center.

Sustainability Workshops Offered at the Center This Summer

This summer the Lyle Center will once again offer a series of workshops on sustainable living, in partnership with the Solar Living Institute (SLI) of Hopland, CA. This workshop series will be hosted at the Lyle Center, Monday July 31st through Sunday August 6th. Workshops offered include:

Introduction to Natural Building (two day course), instructor Drew Hubbell. Through lecture and hands-on activities learn the fundamental techniques for strawbale building construction, participate in a small-scale installation and a tour of the Lyle Center's strawbale building.

Ecological Urban Gardening, instructor Juan Araya. Learn to design and main-

tain your own ecological garden using sustainable options such as crop biodiversity, companion planting, and nutrient recycling. Hands-on experience will include site/soil analysis and preparation, composting, harvesting, pruning, irrigation, planting.

How to make and Use Biodiesel, instructor Joelle Opotowsky. In this hands-on class you'll learn the process of making fuel from fresh or restaurant waste oil and examine the inner workings of a small-scale biodiesel processor. Create your own fossil fuel alternative in one day!

Water Cycling and Recycling, instructor Stephen Lyon. This course provides an introduction to the field of water recycling

including: a brief survey of conventional and alternative wastewater treatment systems, integrated natural living systems, stormwater capture and storage, and simple drinking water quality analysis.

Introduction to Grid-Tied Photovoltaic (PV) Systems (two day course), instructor William Korthoff. Learn the techniques and practices of grid-tied PV solar systems while actually installing a PV system on the Lyle Center site.

To view the detailed listing of classes or to register for a class (or the series) please visit the SLI website: <http://store.solarlivingstore.com/2005schedule.html>

Award from page 1

cluding many elected officials from around the region. In his remarks, Dr. Brown credited the collaborative effort of students, faculty and staff over the past 20 years, beginning with the leadership of the late Professor Lyle. This effort has resulted in a center which can truly serve as a model for community achievement in terms of air quality and a variety of other environmental concerns.

Ten Clean Air Awards were issued by AQMD in 2005. Other recipients included State Senator Alan Lowenthal, FuelMaker Corporation, Gigante USA Supermarkets, and Jonah Ramirez, a nine-year old asthma spokesperson for the American Lung Association.

Boeing Scholars from page 1

terested in implementing sustainable building projects in underserved communities.

Eric Zentmyer is also a first-year MSRS student, exploring solutions for the “restoration economy,” which serves to restore and strengthen local communities and their environments. Specifically, he is exploring bamboo-based rural economic development in Southern Mexico. This scholarship allows Eric to conduct field research in Mexico by supporting travel expenses. Upon completion of the MSRS program, he intends to return to Latin America to work further on the restoration economy.

Congratulations to all of this year’s Boeing scholars.



There’s always something happening at the Center!



Fall Classes @ the Center

These courses are open to non-RS graduate and/or undergraduate students, as well as the broader community through open university. Contact the Center for more information.

RS 301: Life Support Processes. 4 units. Phil Wolff, Instructor

Understanding the complex physical and biological systems, and the social context in which they occur, to meet the needs of communities. Meets General Education Area B4 Synthesis Requirement.

RS 499/499L: Water Refineries. 4 units. Ken McCown, Instructor

Examines water quality in Los Angeles, and how cultural practices affect water. Students will prepare an exhibit on water refineries, which enhance water quality.

RS 501: Regenerative Practices. 4 units Two-week intensive course, Sept. 5-15, Drs. Denise Lawrence & Ron Quinn

Theory, case studies and strategies in energy, water, agriculture, shelter and waste management. Multidisciplinary problem solving. Technical, economic, political and ethical issues.



John T. Lyle Center for Regenerative Studies
California State Polytechnic University, Pomona
4105 W. University Drive
Pomona, CA 91768-2562

Kyle D. Brown, Ph.D., Director

Phone: 909.869.5155
Fax: 909.869.5188
email: crs@csupomona.edu
www.csupomona.edu/crs



Printed on post-consumer recycled paper

