

Creepy Crawlers



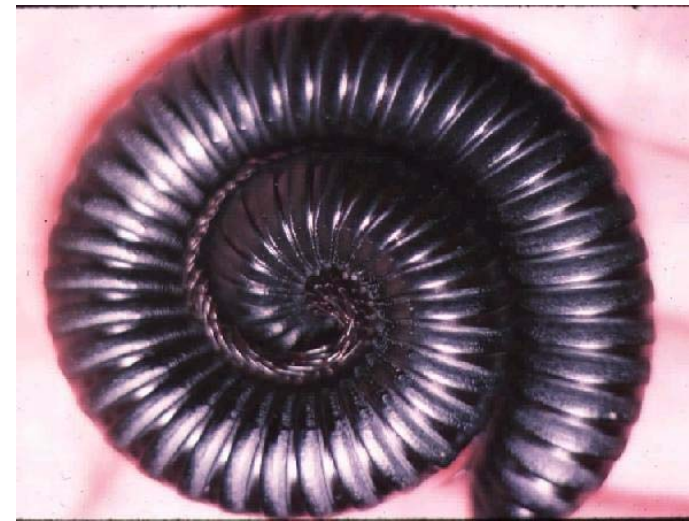
How do you avoid tripping if you have 200 pairs of legs? The MILLIPEDE has evolved gaits like scuttling and undulating to keep its legs in order.

The millipede's body is designed to burrow in leaf litter or under rocks in search of moist habitat. Several pairs of legs move at one time, acting like a miniature "bulldozer."



Although many species are "basic black", millipedes can be quite colorful.

Millipedes are also important decomposers, preferring partially decomposed leaf material to fresh leaves because the plant's distasteful chemicals have already begun to break down.



Their defense relies on thick, calcium-rich cuticles and the ability to roll up.

A few species have defensive chemical secretions to repel predators.



millipede